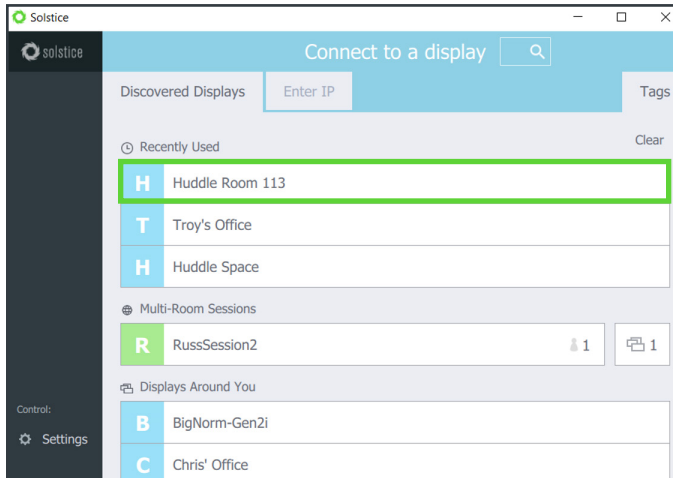
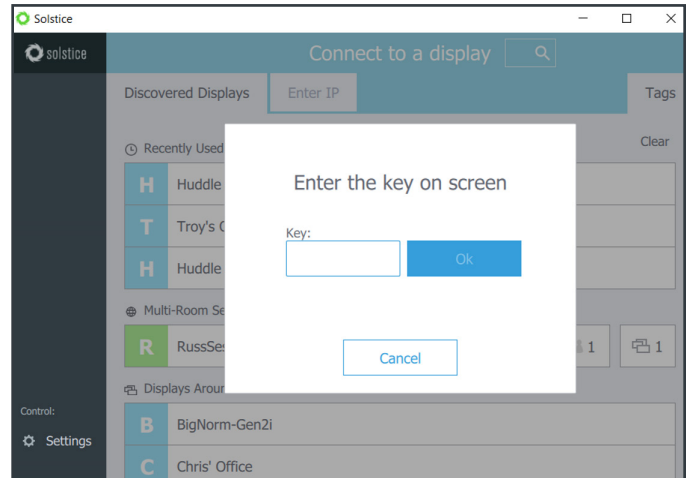




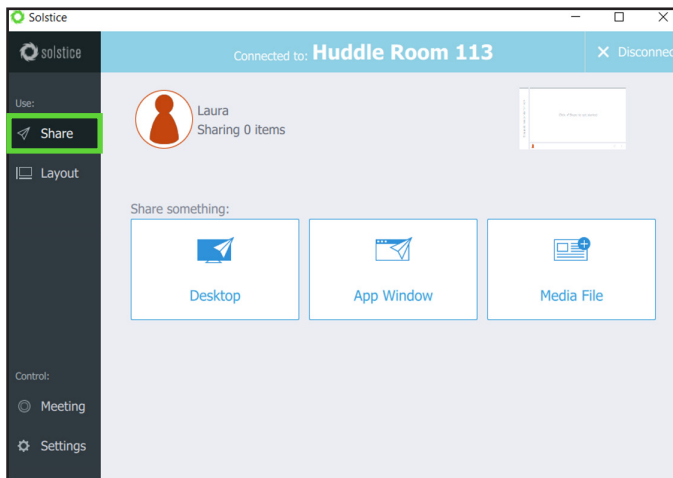
Solstice brings content back to the center of the meeting experience.
Connect and share unlimited content to the Solstice display from any device.



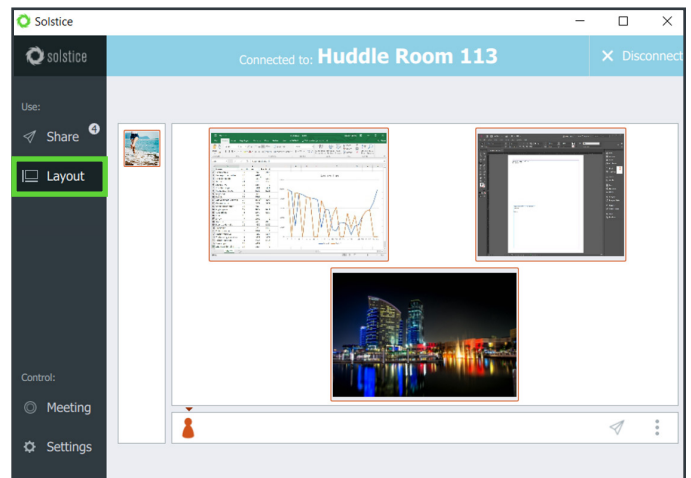
1 Open the Solstice app, find your room's display, and click 'connect'.



2 If prompted, enter the four-digit alphanumeric key found on the display.



3 Choose an option from the Share Panel to begin sharing content to the display.



4 Arrange and control shared content in the Layout Panel.

Need the app?

Enter the IP address on the display into a browser window and click 'Get the app & Connect' to download. On a mobile device, download the free Solstice app from the appropriate marketplace.