

Introduction

Solstice Cloud is a secure cloud-based management and analytics portal that allows technology administrators to easily manage, analyze, and optimize their Solstice-enabled spaces. Management capabilities enable admins to efficiently deploy, organize, monitor, and update their Solstice deployment at scale from anywhere. Additionally, Solstice Cloud's robust utilization tracking combined with quantitative and qualitative meeting analytics helps organizations profile effective meetings, optimize their spaces, and inform future facilities and technology decisions.

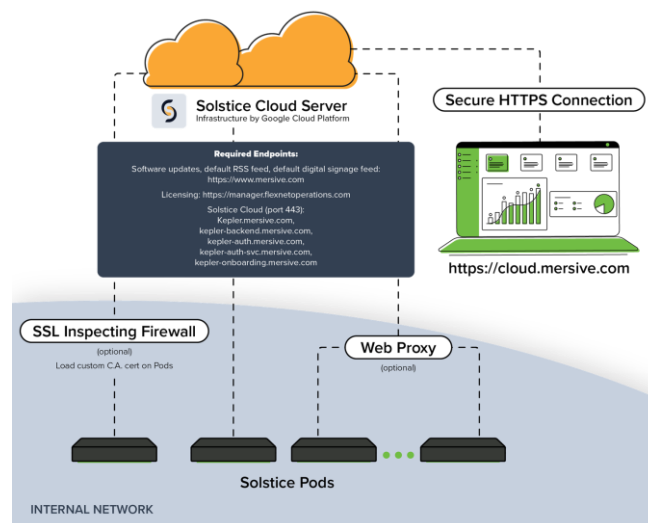
Key Capabilities

- Complete control from anywhere with an internet connection
- Avoid end user disruptions with email alerts and scheduled software updates
- Monitor room density using a USB connected camera as an occupancy counter
- Insight into space utilization, room occupancy, and workforce collaboration
- Customizable to each organization's needs through user-defined categories
- Enterprise ready with security, stability, and data integrity as top priorities

Topology

Solstice Cloud has a standard cloud topology with three components:

1. Solstice Cloud server hosted on the Google Cloud Platform
2. Front-end user interface that runs in a browser
3. Solstice Pods deployed on the on-prem network



Getting Started with Solstice Cloud

A Solstice Cloud account is included for free with your Solstice Pod purchase. To [onboard your Pods into Solstice Cloud](#), the Pods must have internet access and be on software version 3.4 or later. Deployment management capabilities are available for every Solstice Pod on version 4.5 or later. To view real time Pod availability and meeting analytics, Pods require a current Solstice Subscription.

Visit cloud.mersive.com to log in to your Solstice Cloud account or contact Mersive at mersive.com/contact-us for more information.