

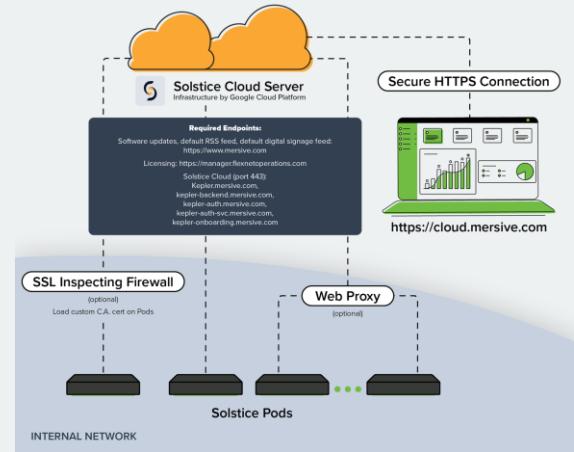
Introduction

Solstice Cloud is a secure cloud-based management and analytics portal that allows technology administrators to easily manage, analyze, and optimize their Solstice-enabled spaces. Management capabilities enable admins to efficiently deploy, organize, monitor, and update their Solstice deployment at scale from anywhere. Due to its cloud architecture vs. the on-premises Dashboard, managing Pods may pose security concerns for some customers. However, security, stability, and data integrity were key credentials when building Solstice Cloud.

Topology

Solstice Cloud has a standard cloud topology with three components:

1. Solstice Cloud server hosted on the Google Cloud Platform
2. Front-end user interface that runs in a browser
3. Solstice Pods deployed on the on-prem network



Security Protocols

Routine penetration testing

- Annual (or more) penetration testing by independent, third-party to validate security of the Solstice Pod and associated cloud systems.

Pods do not require general cloud access

- Only a small number of cloud endpoints are required and can be easily added to firewall rules. Those endpoints are available from Mersive and will not change.

Web proxies are supported

- Proxies are supported if you do not want to allow direct cloud access from on-prem devices. If enabled, all Solstice Cloud traffic will pass through the specified web proxy.

Enterprise grade encryption

- All Solstice Cloud traffic is encrypted with industry standard 2048-bit RSA-based cipher.

Support for SSL-inspecting firewalls

- If using a firewall that inspects encrypted traffic, simply upload the CA cert to each Pod.

Getting Started with Solstice Cloud

A Solstice Cloud account is included for free with your Solstice Pod purchase.

Visit cloud.mersive.com to log in to your Solstice Cloud account or contact Mersive at mersive.com/contact-us for more information.

Privacy Protocols

No content data leaves the internal network

- No screen content, files, or visual information ever leaves the Pod.

No personally identifiable data is collected

- Solstice Cloud does not collect any personally identifiable data about Solstice users. The data collected is best described as metadata about meetings or configuration state of Pods.

GDPR compliant

- Solstice Cloud is fully compliant with GDPR's guidelines and is classified as a Data Controller. Please see the privacy policy (www.mersive.com/privacy-policy) for more details.